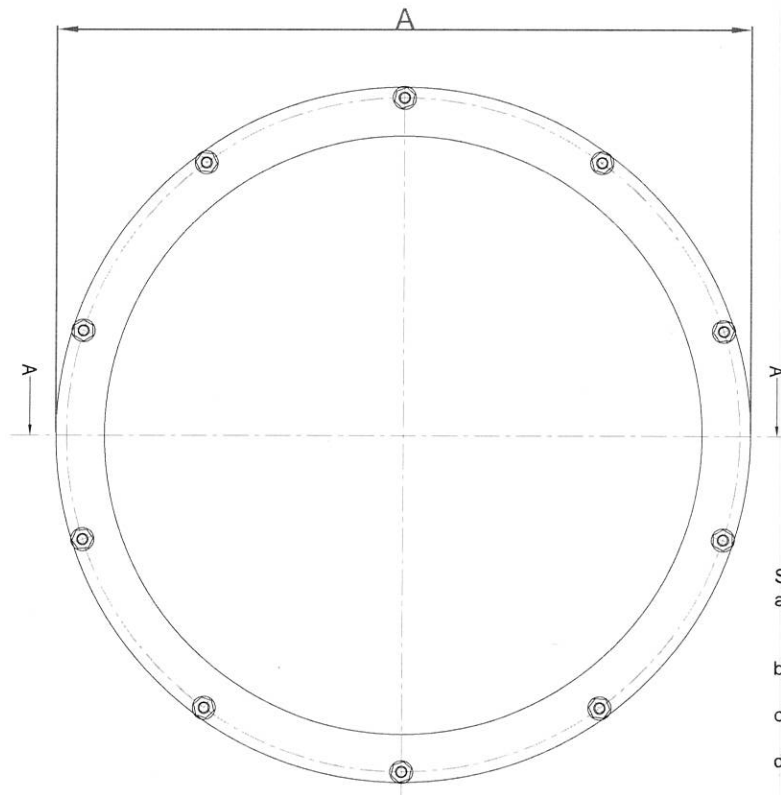
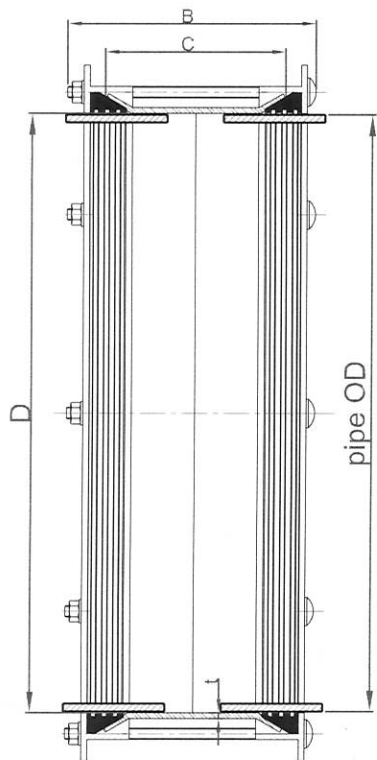


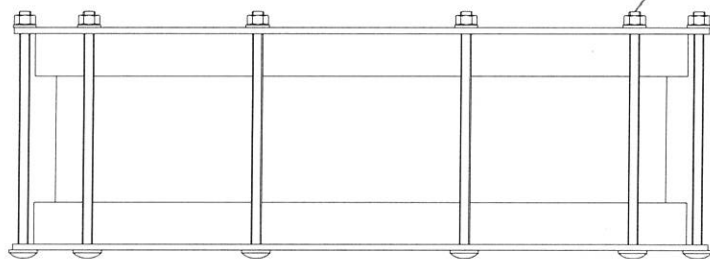
Fig:FC30



SPECIFICATION:-

- a) End Flange and Centre Sleeve: Rolled Steel To BS EN 10025 S275 (BS 4360 Grade 43A) or equivalent
- b) Finishing : Fusion Bonded Epoxy Powder Coated Approx 350 microns thk
- c) Bolts,nuts & washers : HDG Steel to ISO 898-1 Grade 8.8 & DIN 267-4 Gr 8
- d) Sealing ring : Hypalon

M16X355
36Pcs



								BOLTS	
Size	OD	D	L	A	B	C	t	NO	DIA*LGTH
DN2100	2163.6	2174	200	2300	365	250	8	36	M16*355

DRAWER	TOLERANCE	MATERIAL:	UNIT:mm
CHECK	SCALE 1:1	Dedicated Coupling	
APPROVAL	DATE 02/24/14		
Hiwa		REV	201402A

This document is the property of Huihua Valve Industry Co. Distribution of this document without the written consent of the owner is strictly forbidden. Failure to comply will incur a liability for damages.

http://www.hiwaflow.com Website
 sales@hiwaflow.com Email
 86 - 533 - 6077217 Phone
 86 - 533 - 6077233 FAX
 Huihua Valve Industry co.
 No.36 MinAn Road New Hi-Tech Industry
 Zone Zibo Shandong China 255088 p.c