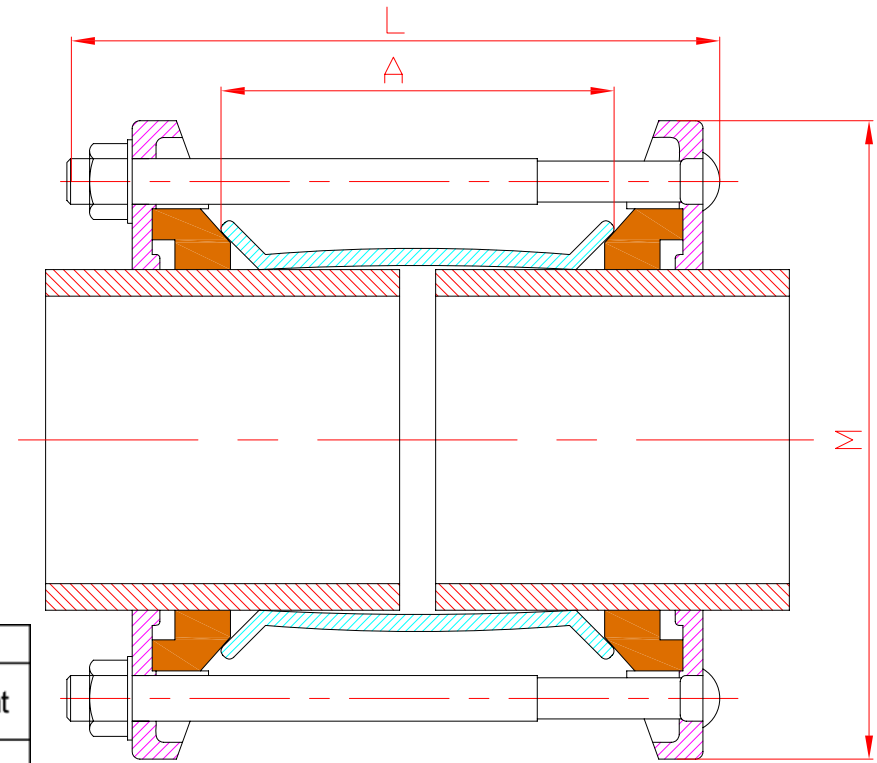


FIG.FC10


Material Specification:

No.	Parts Name	Material
1	Carbon Sleeve	Carbon Steel FBE RAL5017
2	End Ring	GGG50 FBE RAL5017
3	Rubber Seal	EPDM EN 681-1
4	Bolt	AISI316
5	Washer	AISI316
6	Nut	AISI316 with Teflon Coated
7	Cap	Plastic



Dimensions(mm)

Nominal Size (mm)	Size Range (mm)	M	A	Bolts No.-Dia*Length		Weight
				Qty	L	
DN50	59-72	165	190	2	M12*260	2.8
DN65	72-85	180	190	2	M12*260	3
DN80	88-103	185	190	4	M12*275	4.6
DN100	109-128	225	190	4	M12*275	5.7
DN125	132-153	250	190	4	M12*275	7
DN150	159-182	275	190	4	M12*275	9.1
DN175	192-210	305	190	4	M12*275	14.5
DN200	218-235	315	190	4	M12*275	16.5
DN225	242-267	350	250	4	M12*350	17.3
DN250	272-289	395	250	6	M12*350	18.6

DRAWER		TOLERANCE		MATERIAL:	UNIT:mm
CHECK		SCALE		FC10	
APPROVAL		DATE	10/06/14		
				Universal Coupling	
				REV	201410A